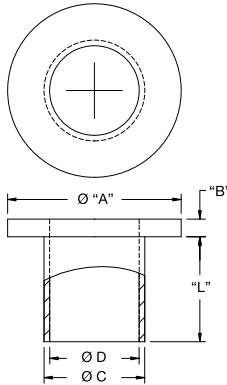


SHOULDER WASHERS



MNI Shoulder Washer



Specifications:

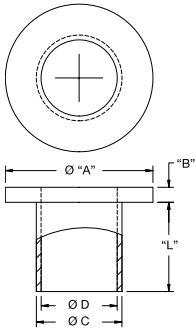
- Material: UL94 V-2 Nylon 6/6,
- Color: Natural

Features:

- Used as a screw insulator and in many bushing applications
- Lightweight
- Resistant to corrosion and abrasion
- High dielectric strength

Item No.	Fits Screw		L		Ø A		B		C		D		Pack Qty.
	Standard	Metric	In	mm	In	mm	In	mm	In	mm	In	mm	
MNI-2-2	#2	M2	.031	0.8	.181	4.6	.047	1.2	.120	3.0	.090	2.3	1000
MNI-2-4	#2	M2	.063	1.6	.181	4.6	.047	1.2	.120	3.0	.090	2.3	1000
MNI-4-2	#4	M2.5	.031	0.8	.235	6.0	.047	1.2	.145	3.7	.115	2.9	1000
MNI-4-3	#4	M2.5	.046	1.2	.235	6.0	.047	1.2	.145	3.7	.115	2.9	1000
MNI-4-4	#4	M2.5	.063	1.6	.235	6.0	.047	1.2	.145	3.7	.115	2.9	1000
MNI-4-5	#4	M2.5	.084	2.1	.252	6.4	.047	1.2	.140	3.6	.115	2.9	1000
MNI-4-6	#4	M2.5	.093	2.4	.235	6.0	.047	1.2	.145	3.7	.115	2.9	1000
MNI-4-8	#4	M2.5	.125	3.2	.235	6.0	.047	1.2	.145	3.7	.115	2.9	1000
MNI-4-10	#4	M2.5	.156	4.0	.235	6.0	.047	1.2	.145	3.7	.115	2.9	1000
MNI-4-12	#4	M2.5	.187	4.7	.235	6.0	.047	1.2	.145	3.7	.115	2.9	1000
MNI-4-16	#4	M2.5	.250	6.4	.235	6.0	.047	1.2	.145	3.7	.115	2.9	1000
MNI-4-24	#4	M2.5	.375	9.5	.235	6.0	.047	1.2	.145	3.7	.115	2.9	1000
MNI-5-3	#5	M3	.051	1.3	.370	9.4	.047	1.2	.236	6.0	.128	3.3	1000
MNI-6-2	#6	M3.5	.031	0.8	.290	7.4	.047	1.2	.170	4.3	.140	3.6	1000
MNI-6-4	#6	M3.5	.063	1.6	.290	7.4	.047	1.2	.170	4.3	.140	3.6	1000
MNI-6-6	#6	M3.5	.093	2.4	.290	7.4	.047	1.2	.170	4.3	.140	3.6	1000
MNI-6-8	#6	M3.5	.125	3.2	.290	7.4	.047	1.2	.170	4.3	.140	3.6	1000
MNI-6-12	#6	M3.5	.187	4.7	.290	7.4	.047	1.2	.170	4.3	.140	3.6	1000
MNI-6-16	#6	M3.5	.250	6.4	.290	7.4	.047	1.2	.170	4.3	.140	3.6	1000
MNI-6-24	#6	M3.5	.375	9.5	.290	7.4	.047	1.2	.170	4.3	.140	3.6	1000
MNI-6-32	#6	M3.5	.500	12.7	.290	7.4	.047	1.2	.170	4.3	.140	3.6	1000
MNI-8-2	#8	M4	.031	0.8	.344	8.7	.063	1.6	.205	5.2	.173	4.4	1000
MNI-8-4	#8	M4	.063	1.6	.344	8.7	.063	1.6	.205	5.2	.173	4.4	1000
MNI-8-6	#8	M4	.093	2.4	.344	8.7	.063	1.6	.205	5.2	.173	4.4	1000
MNI-8-8	#8	M4	.125	3.2	.344	8.7	.063	1.6	.205	5.2	.173	4.4	1000
MNI-8-12	#8	M4	.187	4.7	.344	8.7	.063	1.6	.205	5.2	.173	4.4	1000
MNI-8-16	#8	M4	.250	6.4	.344	8.7	.063	1.6	.205	5.2	.173	4.4	1000
MNI-8-24	#8	M4	.375	9.5	.344	8.7	.063	1.6	.205	5.2	.173	4.4	1000
MNI-8-32	#8	M4	.500	12.7	.344	8.7	.063	1.6	.205	5.2	.173	4.4	1000
MNI-10-4	#10	M5	.063	1.6	.399	10.1	.063	1.6	.260	6.6	.200	5.1	1000
MNI-10-6	#10	M5	.093	2.4	.399	10.1	.063	1.6	.260	6.6	.200	5.1	1000
MNI-10-8	#10	M5	.125	3.2	.399	10.1	.063	1.6	.260	6.6	.200	5.1	1000
MNI-10-12	#10	M5	.187	4.7	.399	10.1	.063	1.6	.260	6.6	.200	5.1	1000
MNI-10-16	#10	M5	.250	6.4	.399	10.1	.063	1.6	.260	6.6	.200	5.1	1000
MNI-10-24	#10	M5	.375	9.5	.399	10.1	.063	1.6	.260	6.6	.200	5.1	1000
MNI-10-32	#10	M5	.500	12.7	.399	10.1	.063	1.6	.260	6.6	.200	5.1	1000
MNI1/4-6	1/4	M6	.093	2.4	.513	13.0	.065	1.7	.312	7.9	.260	6.6	1000
MNI1/4-12	1/4	M6	.187	4.7	.513	13.0	.065	1.7	.312	7.9	.260	6.6	1000
MNI1/4-16	1/4	M6	.250	6.4	.513	13.0	.065	1.7	.312	7.9	.260	6.6	1000
MNI1/4-24	1/4	M6	.375	9.4	.513	13.0	.065	1.7	.312	7.9	.260	6.6	1000
MNI1/4-32	1/4	M6	.500	12.7	.513	13.0	.065	1.7	.312	7.9	.260	6.6	1000
MNI5/16-6	5/16	M8	.093	2.4	.620	15.7	.063	1.6	.360	9.1	.320	8.1	1000
MNI5/16-12	5/16	M8	.187	4.7	.620	15.7	.063	1.6	.360	9.1	.320	8.1	1000
MNI5/16-16	5/16	M8	.250	6.4	.620	15.7	.063	1.6	.360	9.1	.320	8.1	1000
MNI-M2.5-1.3	#2	M2.5	.051	1.3	.248	6.3	.047	1.2	.138	3.5	.114	2.9	1000
MNI-M2.5-3.6	#2	M2.5	.142	3.6	.280	7.1	.059	1.5	.150	3.8	.110	2.8	1000
MNIM3-1.0	#4	M3	.039	1.0	.280	7.1	.039	1.0	.150	3.8	.122	3.1	1000
MNIM3-2.5	#4	M3	.098	2.5	.280	7.1	.039	1.0	.150	3.8	.122	3.1	1000
MNIM3-3.5	#4	M3	.137	3.5	.280	7.1	.039	1.0	.150	3.8	.122	3.1	1000

MNI-HT High Temperature Shoulder Washer



Specifications:

- Material: UL94 V-0 Glass Filled Polyphenylene Sulfide
- Color: Black

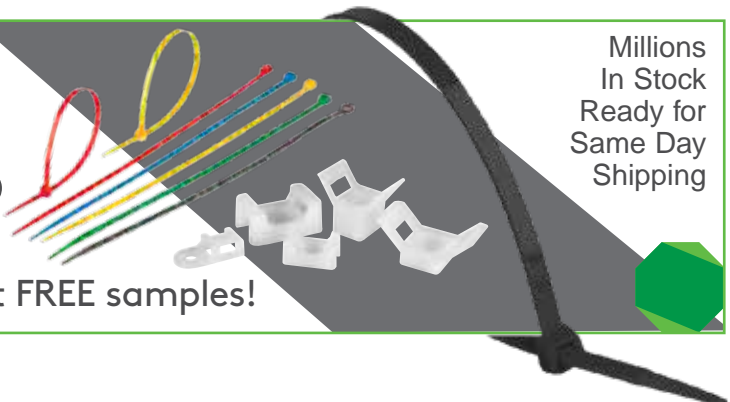
Features:

- Serviceable to 428° F (220° C)
- Design allows insertion of the TO-220 transistor

Item No.	Fits Screw		L		Ø A		B		C O.D.		D I.D.		Pack Qty.
	Standard	Metric	In	mm	In	mm	In	mm	In	mm	In	mm	
MNI-HT-4-2	#4	M3	.031	0.8	.280	7.1	.047	1.2	.145	3.7	.118	3.0	1000
MNI-HT-4-220	#4	M3	.032	0.8	.215	5.5	.040	1.0	.135	3.4	.116	2.9	1000
MNI-HT-10-6	#10	M4.5	.093	2.4	.399	10.0	.063	1.6	.260	6.6	.200	5.1	1000

3"
to
59"

CABLE TIES



Call or go online to request FREE samples!